

S.R. 209 & S.R. 715 Intersection Improvements

Chestnuthill Township, Monroe County, PA

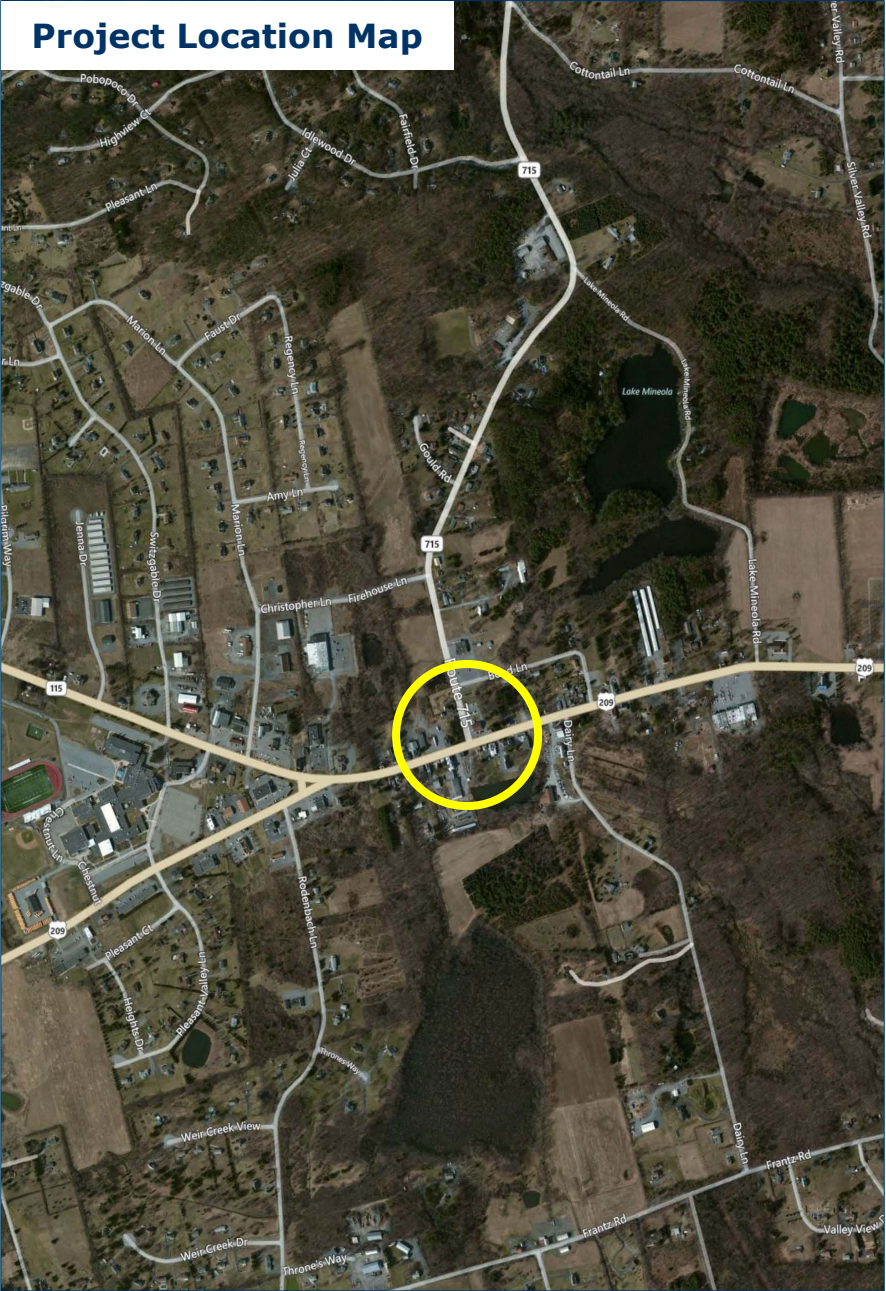
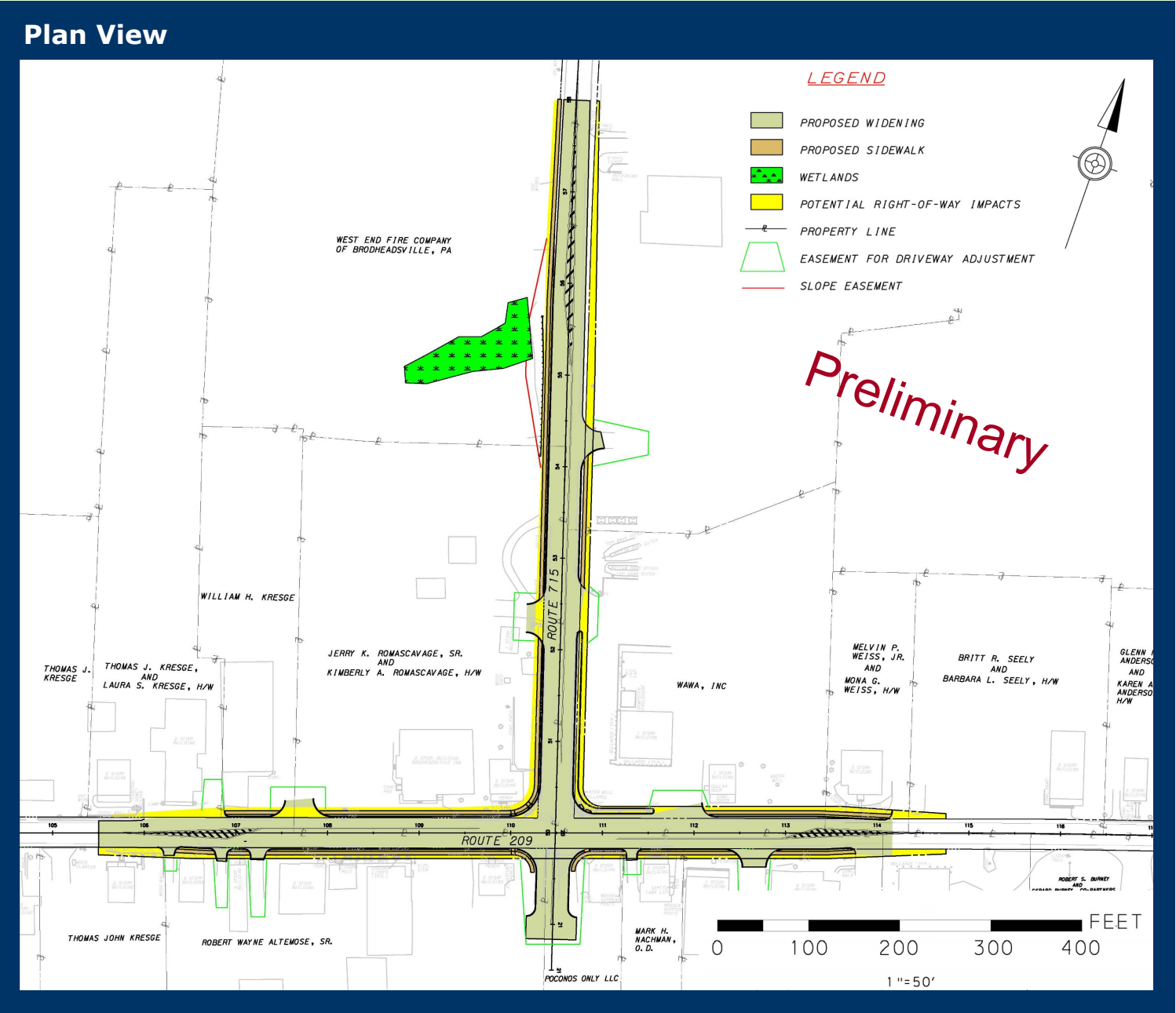
The proposed intersection improvement project is intended to reduce congestion and improve safety along State Route 209 at its intersection with State Route 715.

Route 209 will consist of two 11-foot lanes, a left turn lane and 1-foot shoulders. In addition, Route 715 will consist of three 11-foot lanes with 1-foot shoulders. The project also includes the installation of a new traffic signal.

As part of this project, the T-intersection will be changed into a four-legged intersection with the addition of a driveway which will access the adjacent properties to the south of the intersection. The total width for the driveway will be 35 feet.

Both Route 209 and Route 715 will include a 2-foot grass buffer from the back of curb and a 4-foot sidewalk along both directions.

Construction is anticipated to begin in 2014 and is expected to be completed by 2015.



For more information, please contact:

Brian Graver, P.E.
Project Manager
PA Department of Transportation
(610) 871-4560

Preliminary

