

CAR DETOUR LENGTH SR 0715
 NB: 2.7 MILES
 CAR DETOUR LENGTH SR 0715
 SB: 2.7 MILES

NOTES:

1. NOTIFY CHESTNUTHILL AND JACKSON TOWNSHIPS, PENNDOT DISTRICT 5-0, EMERGENCY SERVICES PROVIDERS AND LOCAL SCHOOL DISTRICTS A MINIMUM OF TWO (2) WEEKS PRIOR TO THE IMPLEMENTATION OF THIS DETOUR.

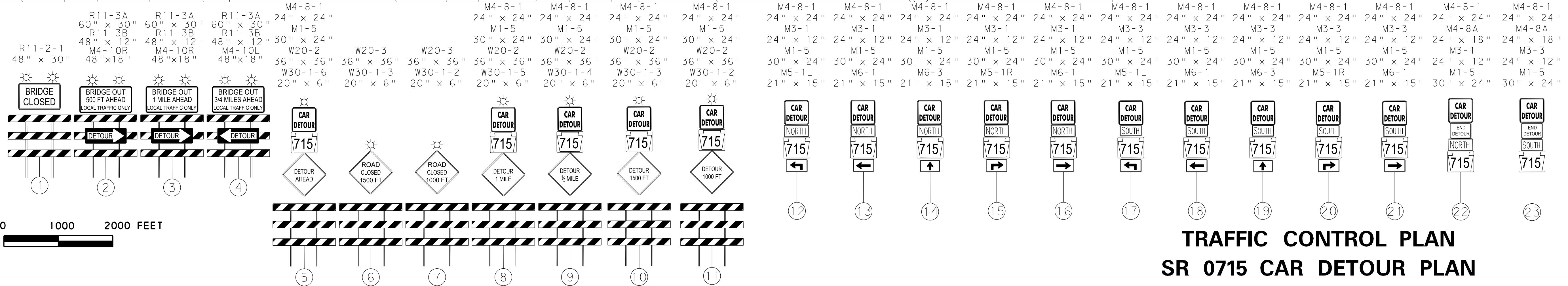
2. SIGN (24) TO BE PLACED FOURTEEN (14) DAYS PRIOR TO ROAD CLOSING.

3. PROVIDE SUFFICIENT TYPE III BARRICADES TO ENTIRELY CLOSE SR 0715.

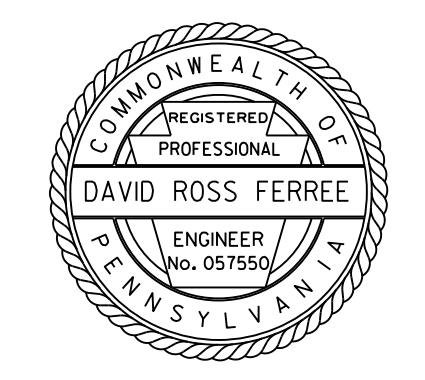
DISTRICT	COUNTY	ROUTE	SECTION	SHEET
5-0	MONROE	0715	03B	2 OF 4
TOWNSHIP OF CHESTNUTHILL				
REVISION NUMBER				DATE
				BY

**SR 0715 CAR DETOUR PLAN
 TABULATION OF TRAFFIC CONTROL DEVICES**
 INCLUDED IN ITEM 0901-0001
 (FOR INFORMATION ONLY)

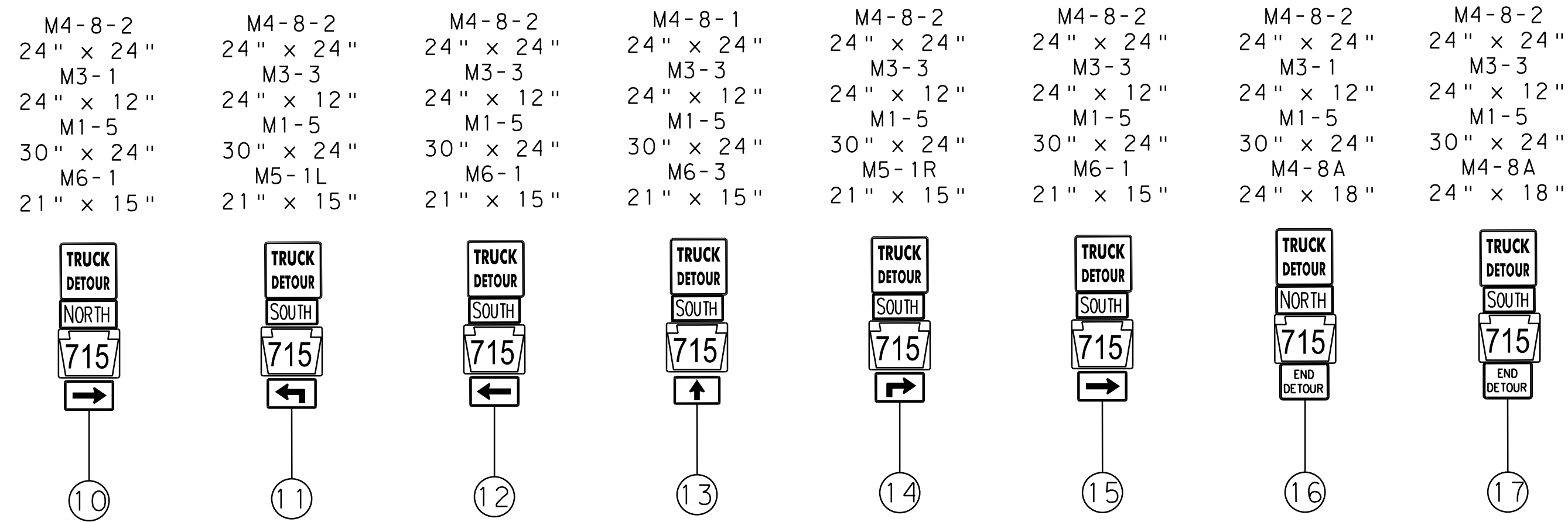
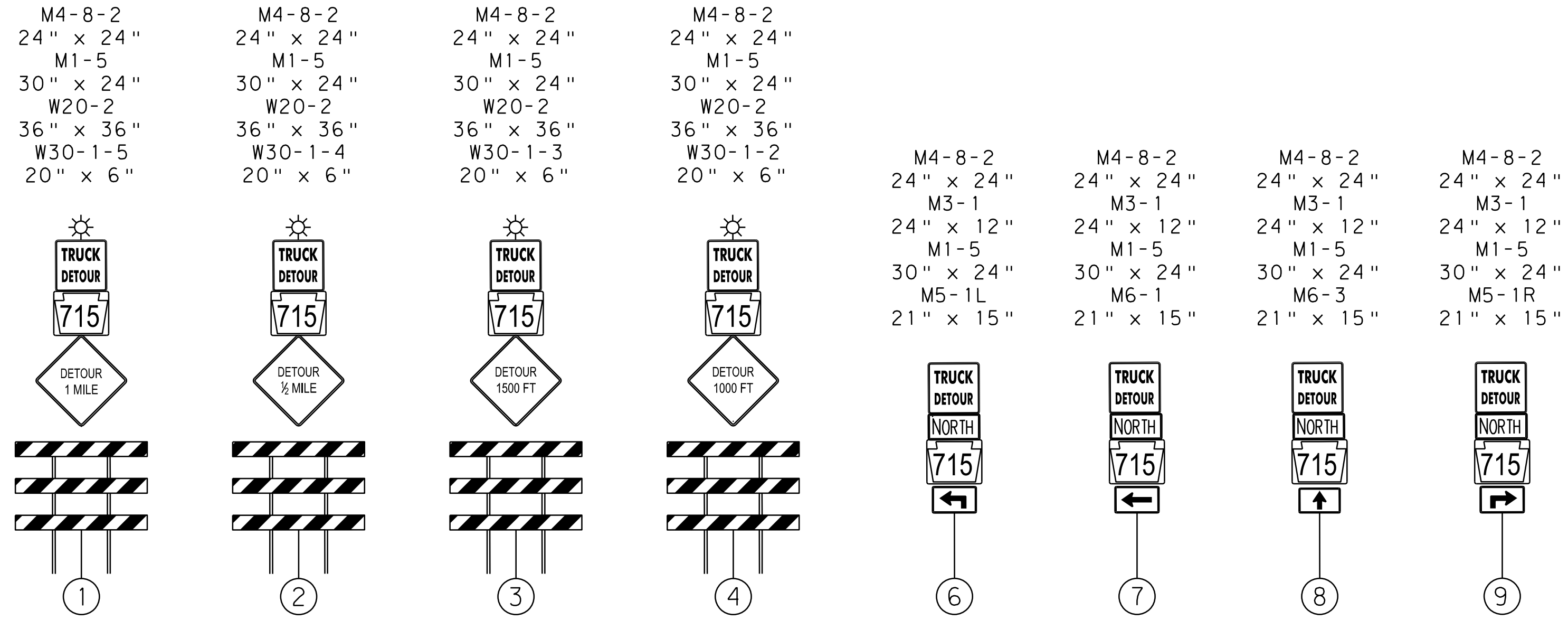
SERIES	SIZE OR UNIT	MESSAGE OR DESCRIPTION	QUANTITY
M1-5	30"x24"	PA 715	38
M3-1	24"x12"	NORTH	19
M3-3	24"x12"	SOUTH	9
M4-8A	24"x18"	END DETOUR	2
M4-8-1	24"x24"	CAR DETOUR	38
M4-10L	48"x18"	DETOUR ARROW LEFT	2
M4-10R	48"x18"	DETOUR ARROW RIGHT	4
M5-1L	21"x15"	LEFT AHEAD ARROW	4
M5-1R	21"x15"	RIGHT AHEAD ARROW	5
M6-1	21"x15"	ARROW	10
M6-3	21"x15"	STRAIGHT AHEAD ARROW	7
R11-2-1	48"x30"	BRIDGE CLOSED	2
R11-3A	60"x30"	ROAD CLOSED XX FEET AHEAD LOCAL TRAFFIC ONLY	6
R11-3B	48"x12"	BRIDGE OUT	6
W20-2	36"x36"	DETOUR	10
W20-3	36"x36"	ROAD CLOSED	4
W23-101	96"x48"	THIS BRIDGE TO BE CLOSED FOR CONSTRUCTION XXXX	2
W30-1-2	20"x6"	1000 FT	4
W30-1-3	20"x6"	1500 FT	4
W30-1-4	20"x6"	1/2 MILE	2
W30-1-5	20"x6"	1 MILE	2
W30-1-6	20"x6"	AHEAD	2
-	-	TYPE B LIGHT	30
-	-	TYPE III BARRICADE	22



**TRAFFIC CONTROL PLAN
 SR 0715 CAR DETOUR PLAN**



DISTRICT	COUNTY	ROUTE	SECTION	SHEET
5-0	MONROE	0715	03B	4 OF 4
TOWNSHIP OF CHESTNUTHILL				
REVISION NUMBER		DATE	BY	



SR 0715 TRUCK DETOUR PLAN
TABULATION OF TRAFFIC CONTROL DEVICES
INCLUDED IN ITEM 0901-0001
(FOR INFORMATION ONLY)

SERIES	SIZE OR UNIT	MESSAGE OR DESCRIPTION	QUANTITY
M1-5	30"x24"	PA 715	52
M3-1	24"x12"	NORTH	25
M3-3	24"x12"	SOUTH	15
M4-8A	24"x18"	END DETOUR	2
M4-8-2	24"x24"	TRUCK DETOUR	52
M5-1L	21"x15"	LEFT AHEAD ARROW	4
M5-1R	21"x15"	RIGHT AHEAD ARROW	5
M6-1	21"x15"	ARROW	9
M6-3	21"x15"	STRAIGHT AHEAD ARROW	20
W20-2	36"x36"	DETOUR	12
W30-1-2	20"x6"	1000 FT	4
W30-1-3	20"x6"	1500 FT	4
W30-1-4	20"x6"	1/2 MILE	2
W30-1-5	20"x6"	1 MILE	2
-	-	TYPE B LIGHT	12
-	-	TYPE III BARRICADE	12

**TRAFFIC CONTROL PLAN
SR 0715 TRUCK DETOUR PLAN**

